

GRAHAM STUDIOS

Broadcast Furniture

Radius Xp

Instruction Manual



www.graham-studios.com

(970) 225-1956

Copyright 2013 Graham Studios LLC

This manual is a generic guide. The assembly of an unbalanced “U” is used as an example. All cabinets are built as a single module then bolted together.

The Shop Drawing of your particular configuration is included with this manual. The panel legs are numbered to guide in layout of your configuration.

Assembly consists of:

1. Assemble cabinets—they vary in size & shape only— the basic assembly method is the same on all
2. Place cabinets in your configuration
3. Bolt together
4. Attach Top

Please call the factory if you have any questions at (970) 225-1956.

Table of Contents

1. Equipment / RD Cabinet Assembly.....	4
2. PBC / Utility /Corner Cabinet Assembly.....	6
3. HP Support Wing Installation.....	8
4 Layout & Bolt Configuration.....	9
5 Modesty Panel Installation.....	10
6. Tabletop Installation ...	11

Care and Maintenance

Horizontal and vertical surfaces may be cleaned with mild soap and water.

Tools needed :

1. #2 Phillips screw driver (Power drill makes it much easier)
2. 2 each— 7/16” open end wrenches

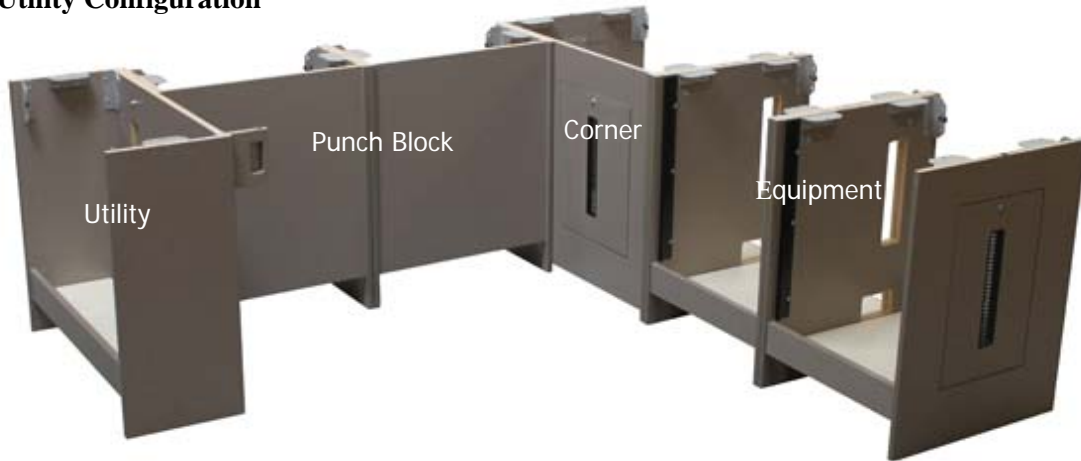
We will repair or replace any part found to be defective within one year from date of purchase

SAMPLE CONFIGURATIONS

3

**** A Shop Drawing will be included with your configuration on it. The panel legs are numbered to guide in layout of your studio. ****

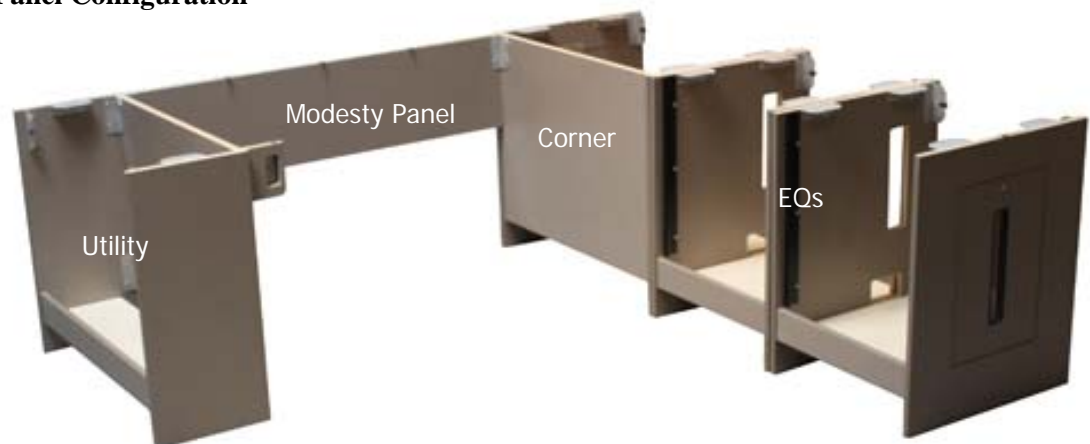
PBC with Utility Configuration



PBC with RD Configuration

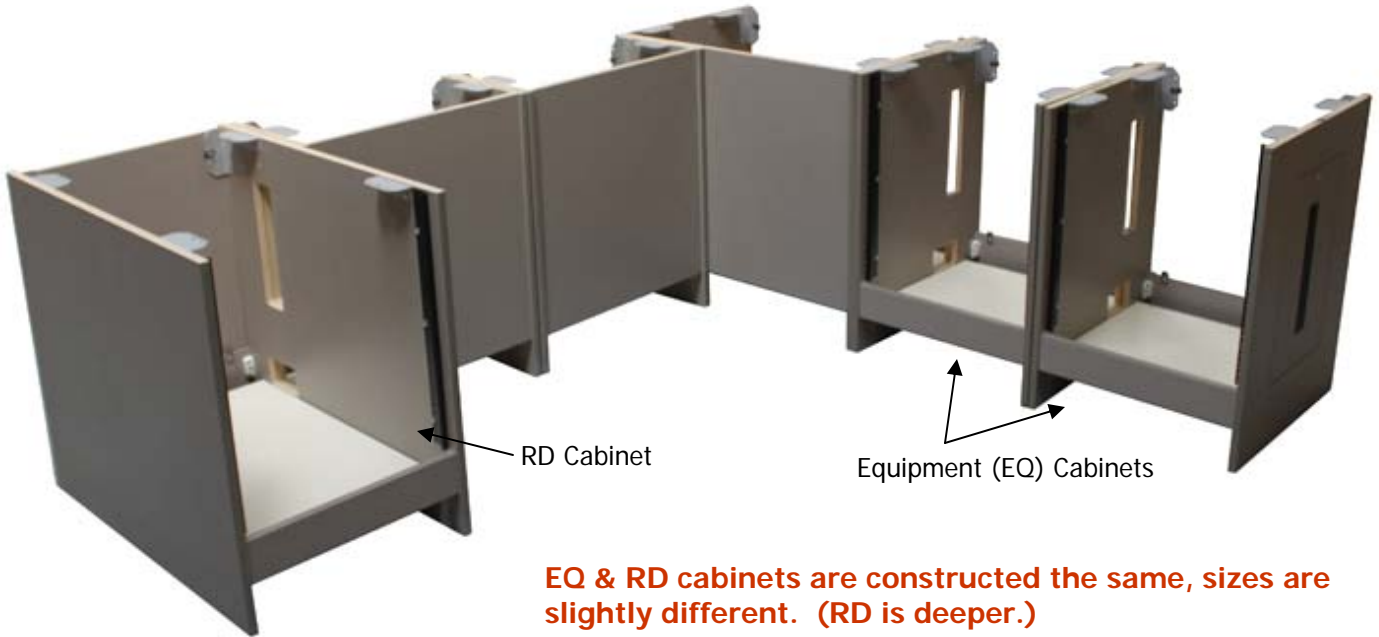


Modesty Panel Configuration

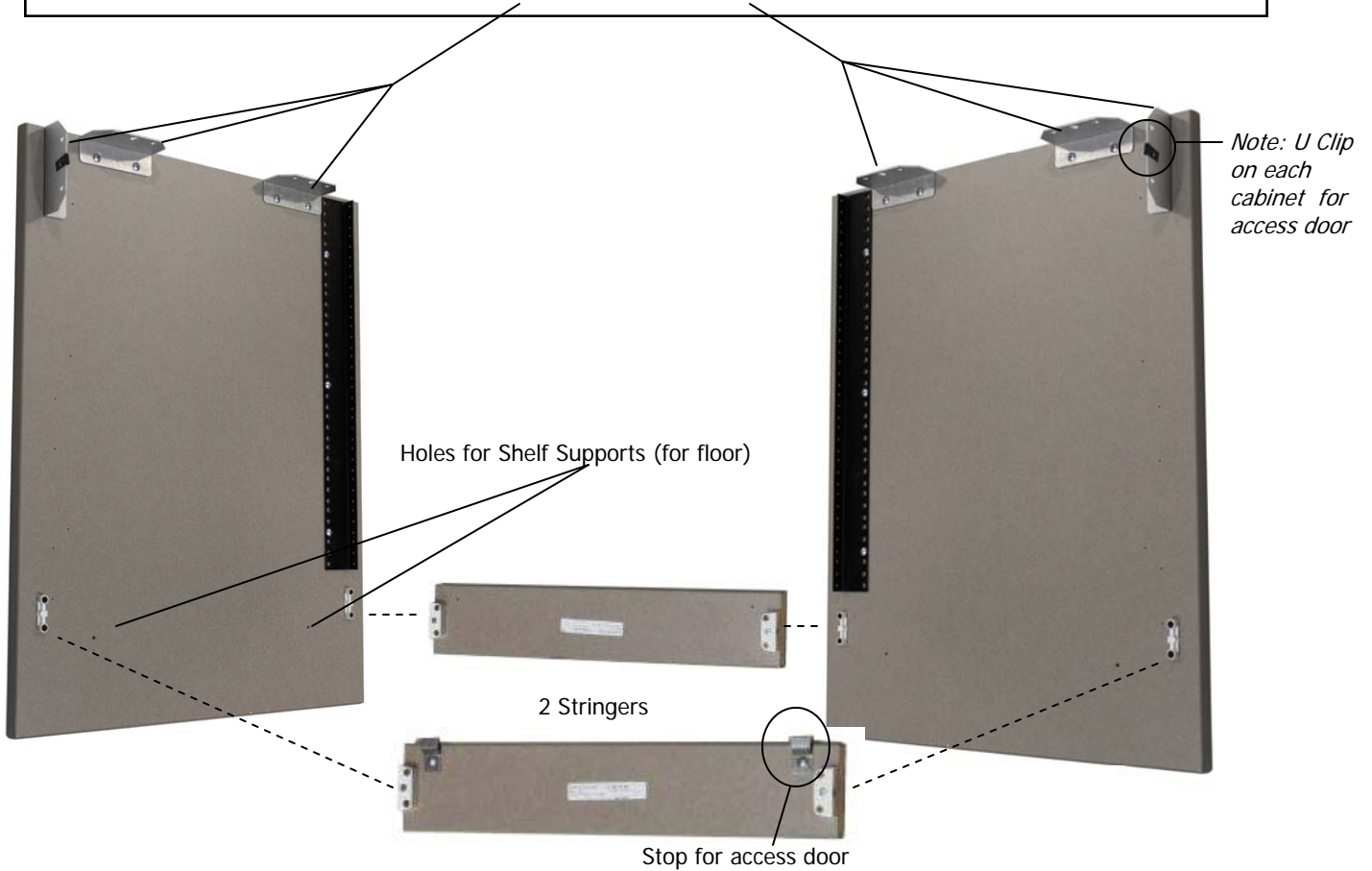


Equipment / RD Cabinet Assembly

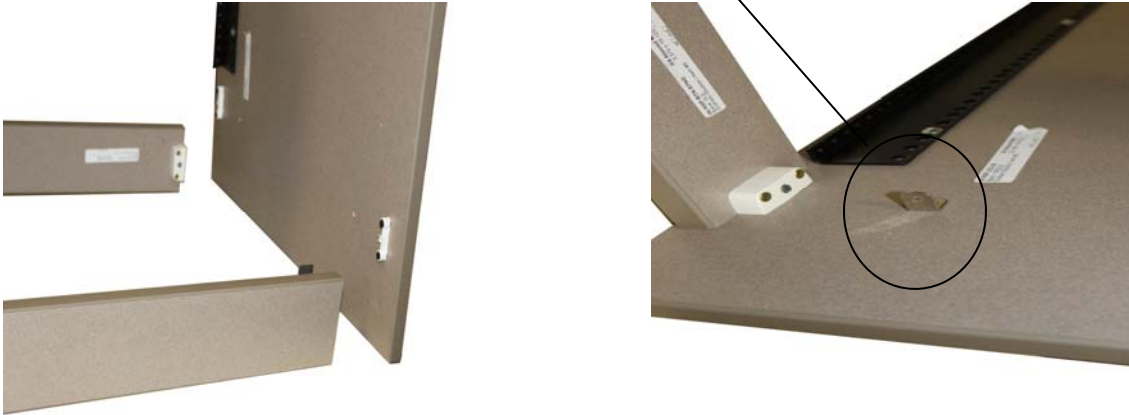
Cabinet with rack rails & access door



EQ / RD cabinet — Attach 3 Universal Brackets on each leg using 3/4 Truss head screws. Pilot holes are pre-drilled.

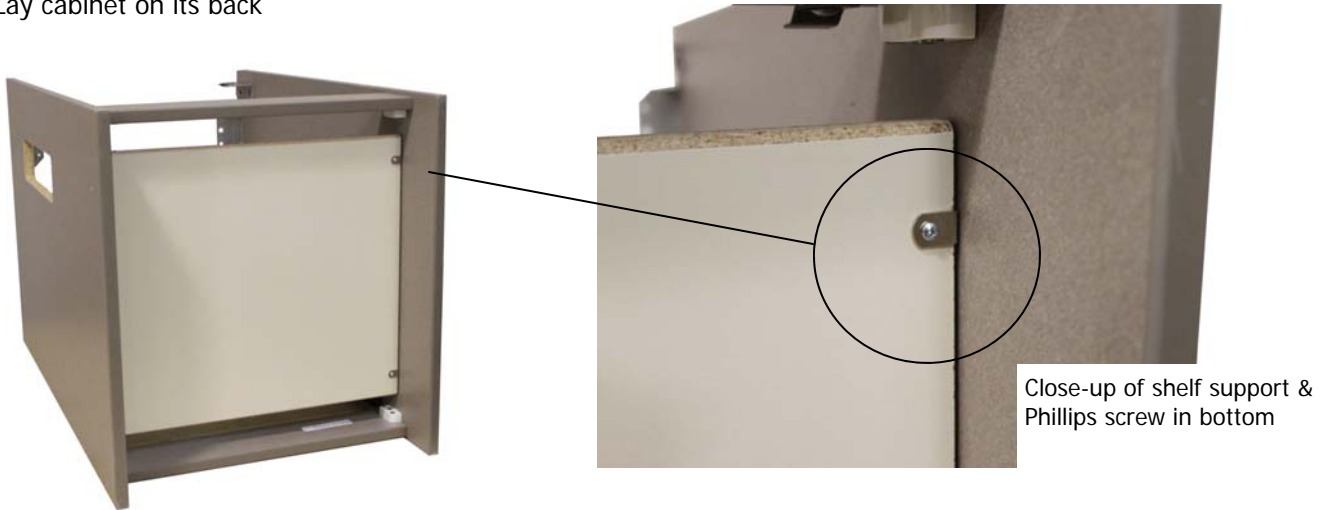


Attach 2 Stringers & Insert 2 shelf supports on each leg



Secure Bottom with 5/8 pan head Phillips screws

Lay cabinet on its back



Close-up of shelf support & Phillips screw in bottom

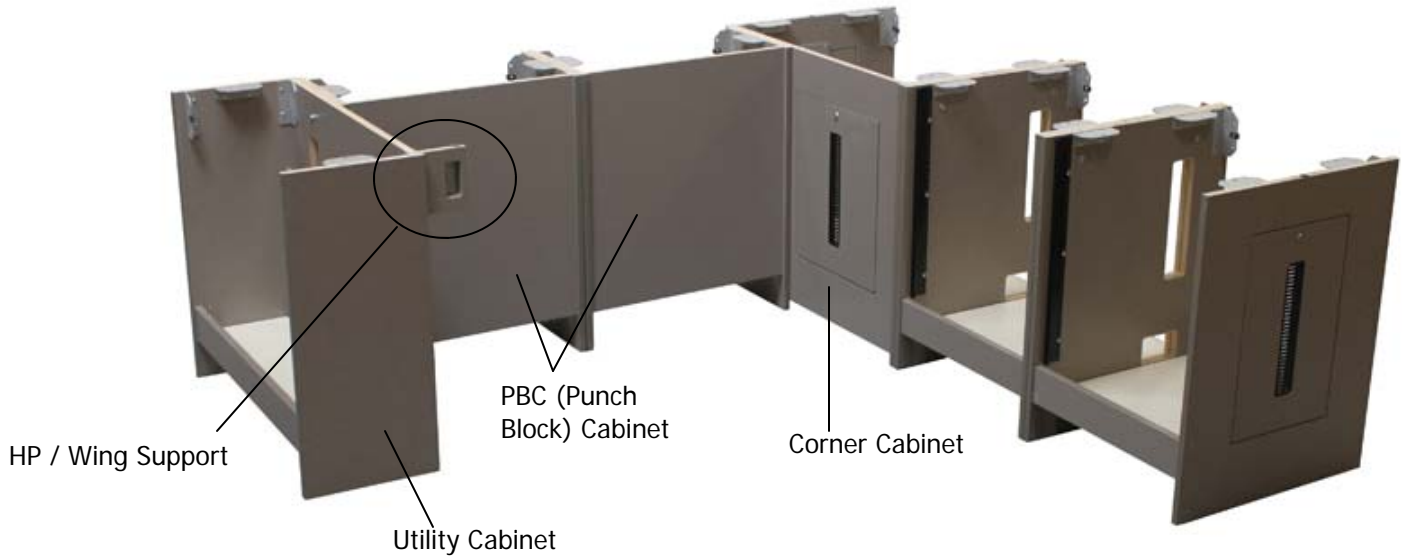
Secure Rear Door with 1/4x20 machine screw with finish washer



***Repeat assembly for multiple cabinets**

Utility / PBC / Corner Cabinet Assembly

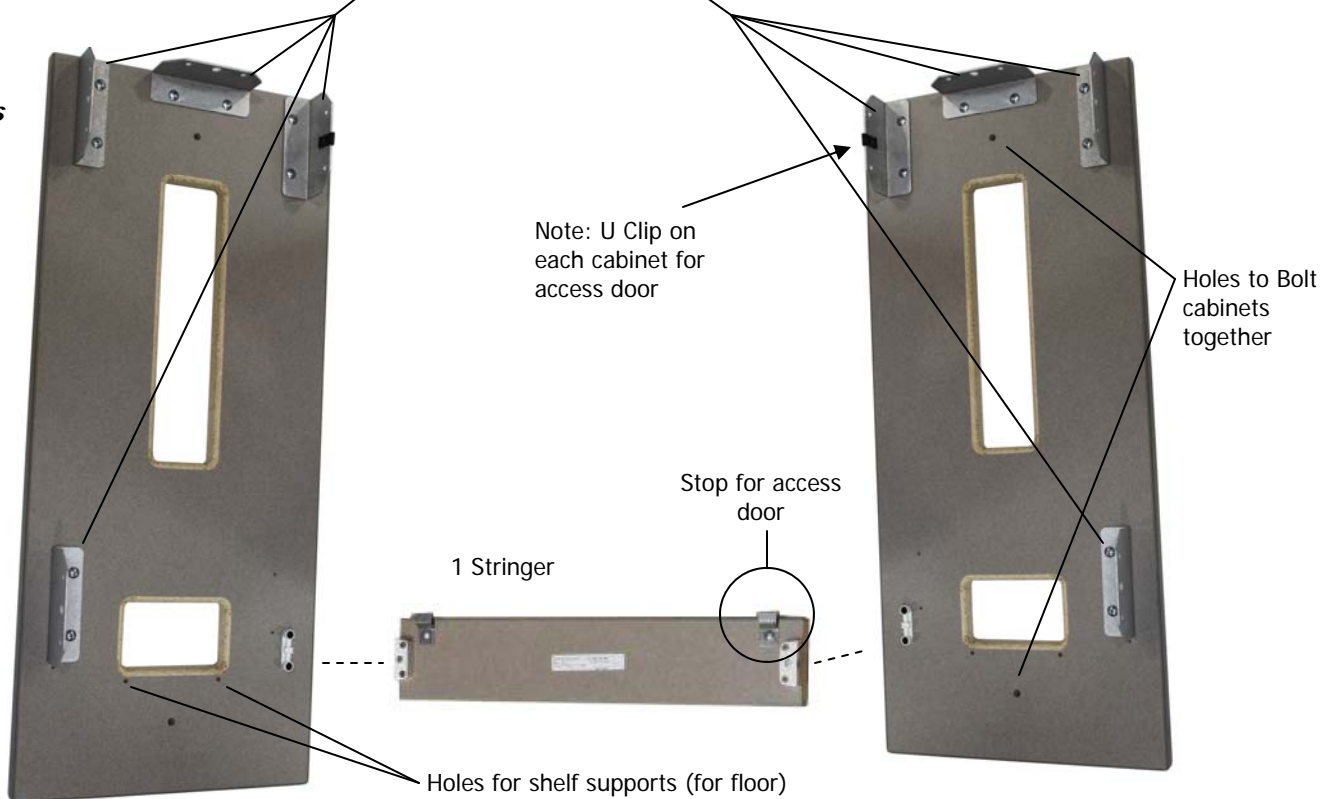
Cabinet with a utility panel & access door



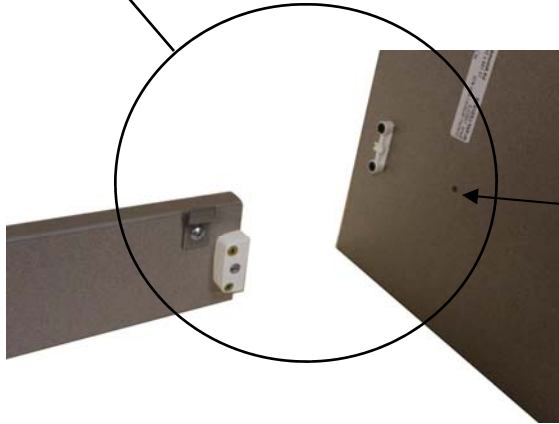
Utility, PBC & Corner cabinets are constructed the same, sizes are slightly different. (Corner is deeper.)

Utility / PBC / Corner Cabinet — Attach 4 Universal Brackets on each leg w/ 3/4 Truss head screws. Pilot holes are pre-drilled.

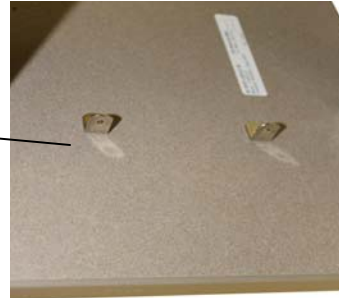
Note: PBC is unhandled



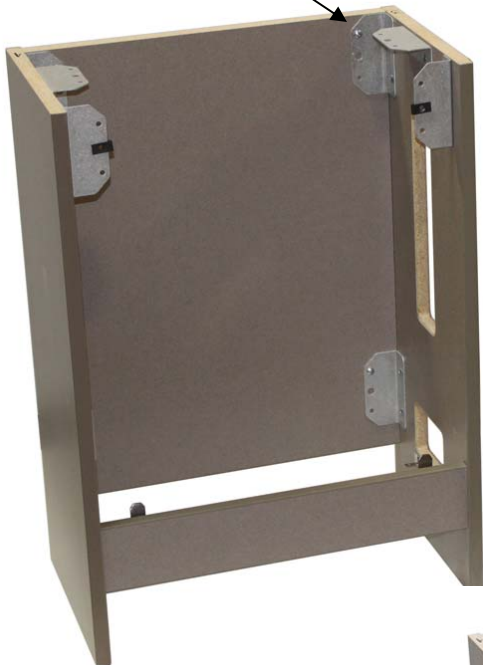
Attach stringer to legs



Insert 2 supports on each leg for floor



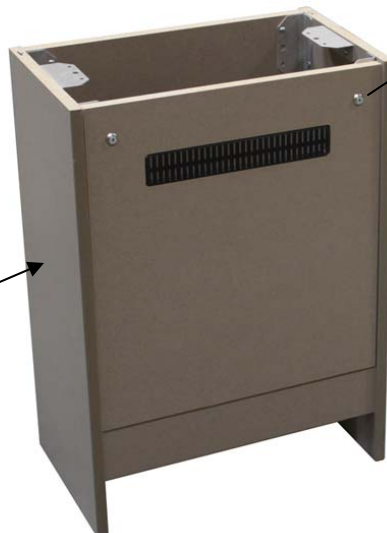
Secure utility panel to cabinet with 3/4 Truss head screws with the exception of thru holes where HP wing support is required.



Attach Bottom with 5/8 Phillips screws



Attach Access door with 1/4 x 20 machine screws and finish washers



Note: Multiple PBC cabinets will have wire egress on both sides

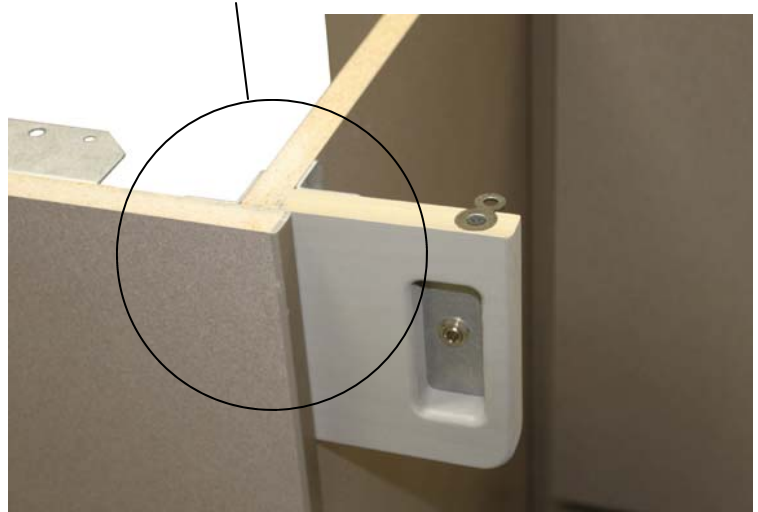
***Repeat assembly for multiple cabinets**

Secure Utility Panel and HP Support Wing where required

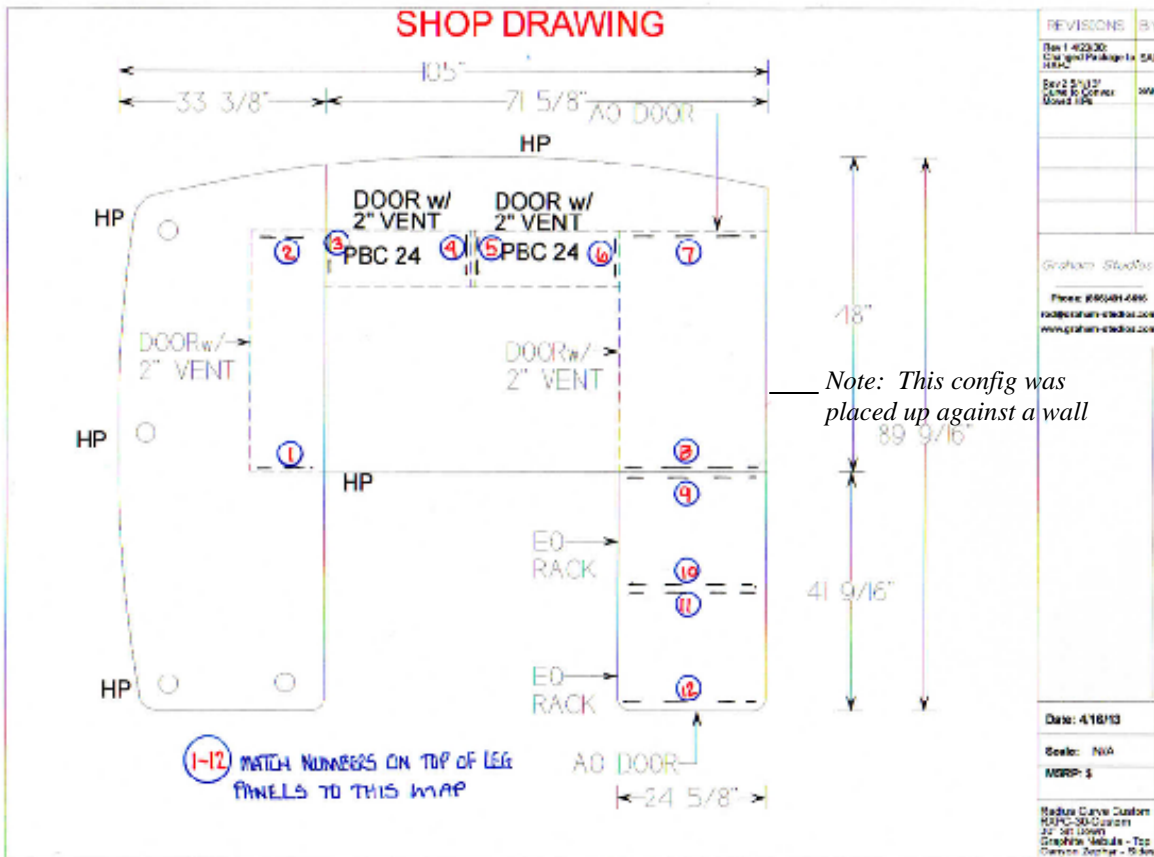
Bolt support wing on Utility panel with 1/4 x 20 Bolts



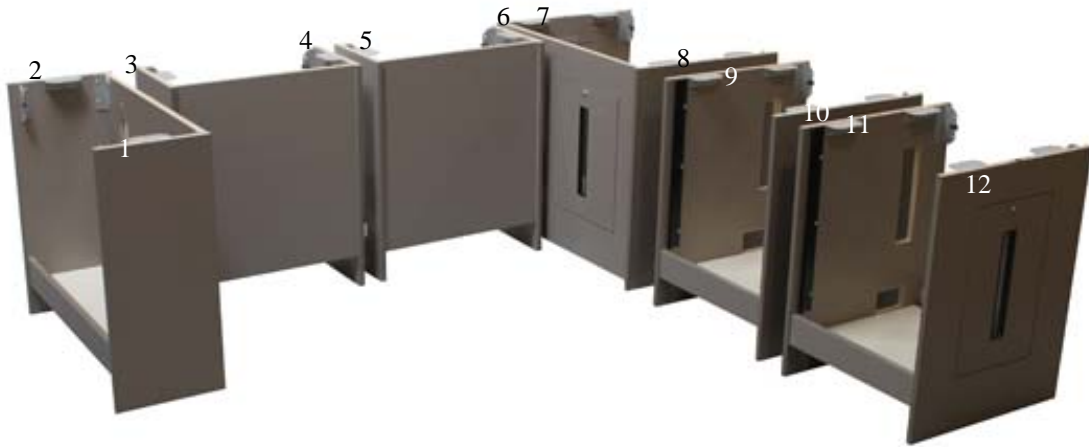
** Ensure that the wing is flush with the top of adjoining leg & utility panel****



Below is a typical configuration map. Leg panels are marked in numerical sequence as shown. Your configuration may differ. *Your map is included along with the manual.*



Orient your configuration according to your Shop Drawing



Bolt cabinet leg panels together using 1/4 x 20 x 2" bolts

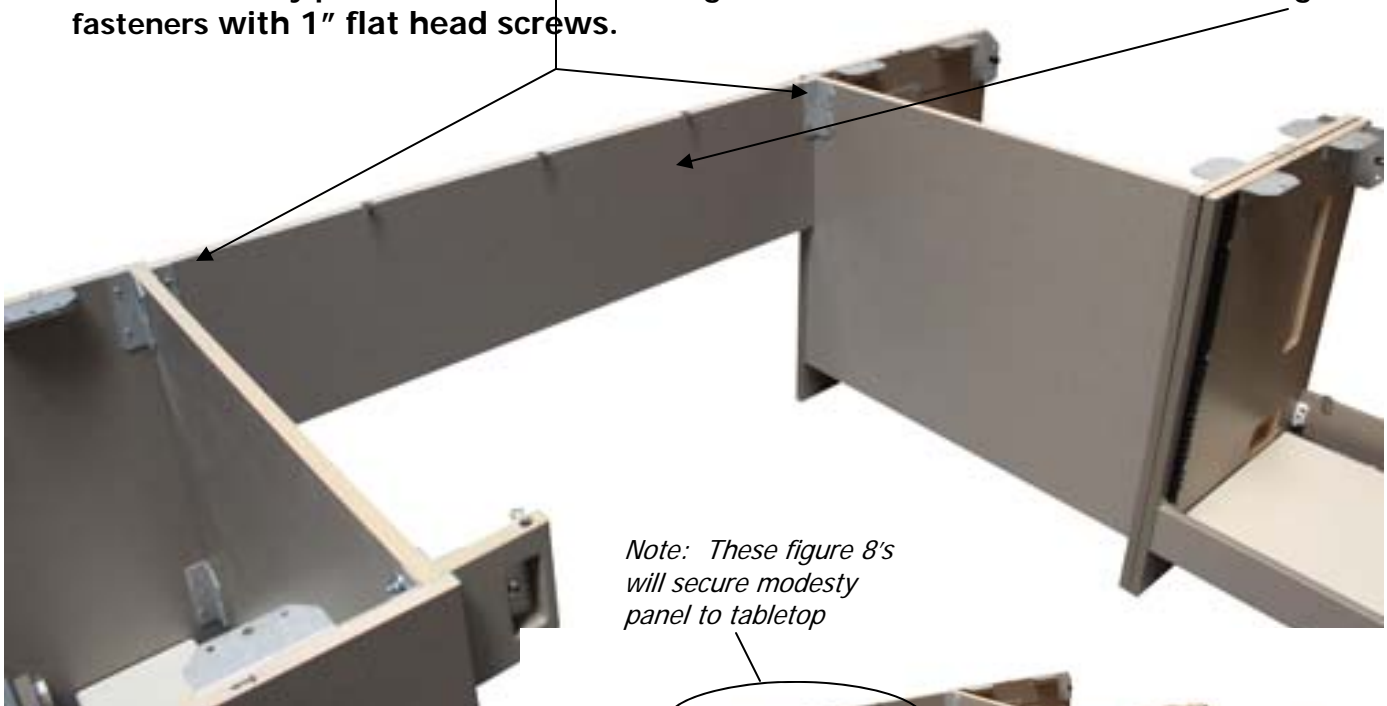


Some configurations may have the RD cabinet in lieu of the utility cabinet

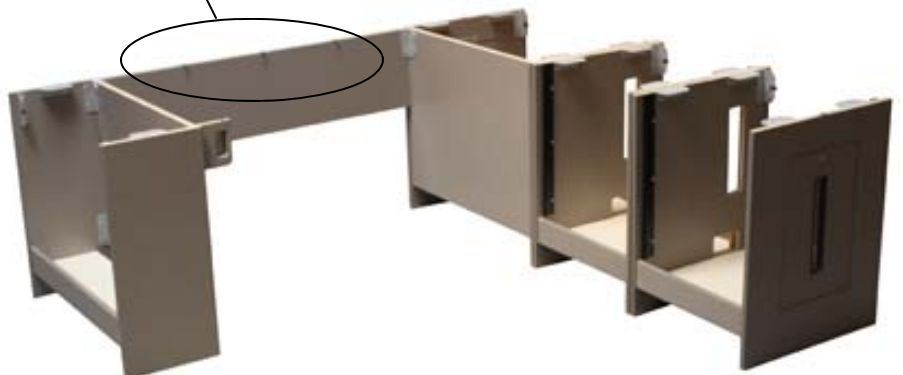


Configuration with a Modesty Panel.

Secure modesty panel with 2 brackets using 3/4 truss head screws. Attach the 3 figure 8 fasteners with 1" flat head screws.



Note: These figure 8's will secure modesty panel to tabletop



Secure top with 3/4 Truss head screws in pre-drilled holes.

Do NOT tighten screws until all tops are installed



Attach adjacent top w/ 3/4 Truss head screws.



Attach legs w/ 1" Phillips pan head screws on underside of Interview top



Secure final top with 3/4 Truss head screws



Secure Guest HP assembly with 3/4 Truss head screws on underside of interview table



Align top for fit & tighten screws as needed

Improved Features

Punch Block cabinets



Improved wire egress. PBC upgrade to RD cabinet



Passive ventilation and custom access doors.

